



57ft, Mike Christian, 2005, Traditional Style



BERTHS:

4



TOILET:

Pump out



HEATING:

Webasto -
Inoperative



SURVEY:

-



B.S.C:

26/02/2029



BLACKING:

March 2023



ENGINE:

Beta



LAYOUT:

Standard

**Venetian
marina**

Venetian Marina (Nantwich) Ltd
Cholmondeston, Nantwich, Cheshire
CW5 6DD. 01270 528251
sales@venetianmarina.co.uk
www.venetianmarina.co.uk

**For further information please see
a member of the sales team.**

It is the responsibility of the buyer to ensure that all particulars given in the course of the purchase of the boat are accurate. Such particulars are intended only as a guide and do not constitute a term of any contract.



Boat Specification

Plating Specification	10/6/5/4mm
Flat, V-Hull or Keeled	Flat Hull
Fitted out By	Snug Boats
Fixed Berths	Double
Additional Berths	Dinette

Engine Specification

Engine Make	Beta
No. Of Cylinders	4
Keel, Water or Air Cooled	Keel Cooled
Gearbox Make	PRM 120
Aqua Drive	No
Bow Thruster	No
Diesel Tank Capacity	200 Litres

Hot Water & Heating Systems

Source of Hot Water	Calorifier via engine, and immersion heater
Central Heating	Webasto - Inoperative
Solid Fuel Stove	Yes
Water Tank Capacity	540 Litres
Material used	-
Additional Systems	-

Electrical System & Components

12 Volt Lighting	Yes - All cabin lights are LED
240 Volt Landline	Yes
Inverter	1800
Generator	-
Batteries	One starter and four domestic
Additional Systems	Solar panel with MMPT controller - connected to domestic batteries. Galvanic isolator

Bathroom Specification

Type Of Toilet	Pump out
Bath Fitted	-
Separate Shower Fitted	Yes
Vanity Basin Fitted	Yes
Additional Systems	-

Kitchen Specification

Make & Model Of Cooker	Vanette GG 7000
Separate Hob	Vanette four burner 4000/2
Microwave Fitted	Belling 700w
Make & Model Of Fridge	LEC
Gas, 12 volt or 240 volt	12 volt
Additional Systems	-

Fit Out Materials

Insulation Used

Types Of Wood Used

Window Types

Materials Used

Bulls Eye, Pigeon Box or Houdini Hatch

Exterior Doors

Side Hatches

Front & Back Covers

Spray Foam

Wood panelling

Hopper

Gold Anodised

-

Front - Wood, Back - Steel

Yes

Cratch & cover

History Of Vessel

Boat Safety Certificate

Last Hull Blacking

Anodes

Further Maintenance

Recent Survey

Additional Information

RCD/RCR Compliant?

Further Information

26/02/2029

March 2023

Okay in March 2023

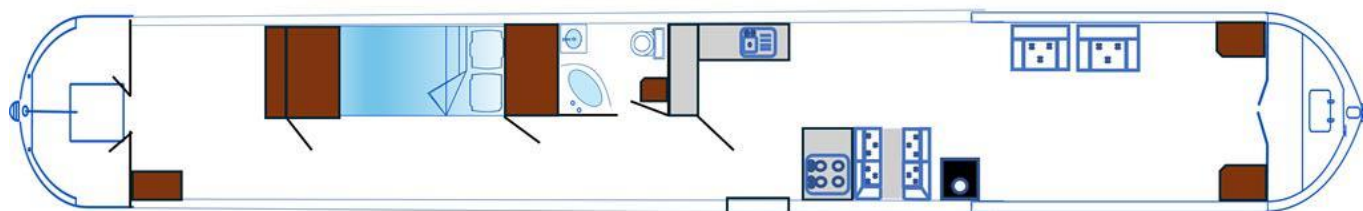
Engine service yearly by Venetian Marina

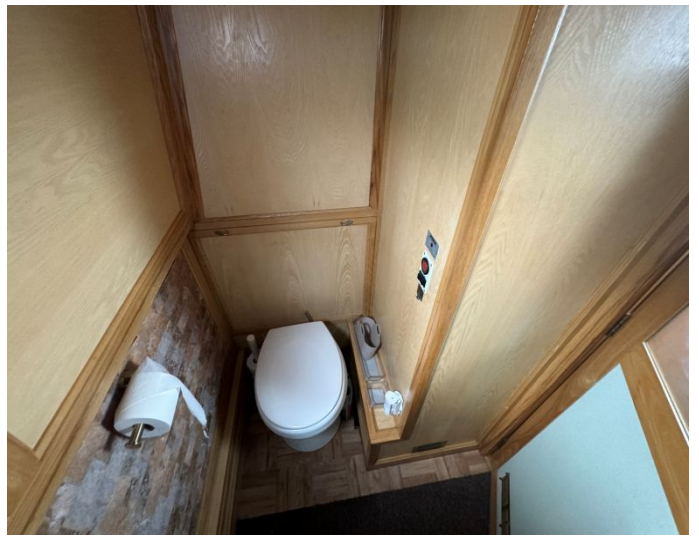
-

-

Yes

-





Venetian Marina (Nantwich) Ltd
 Cholmondeston, Nantwich, Cheshire
 CW5 6DD. 01270 528251
sales@venetianmarina.co.uk
www.venetianmarina.co.uk

**For further information please see
 a member of the sales team.**

It is the responsibility of the buyer to ensure that all particulars given in the course of the purchase of the boat are accurate. Such particulars are intended only as a guide and do not constitute a term of any contract.

